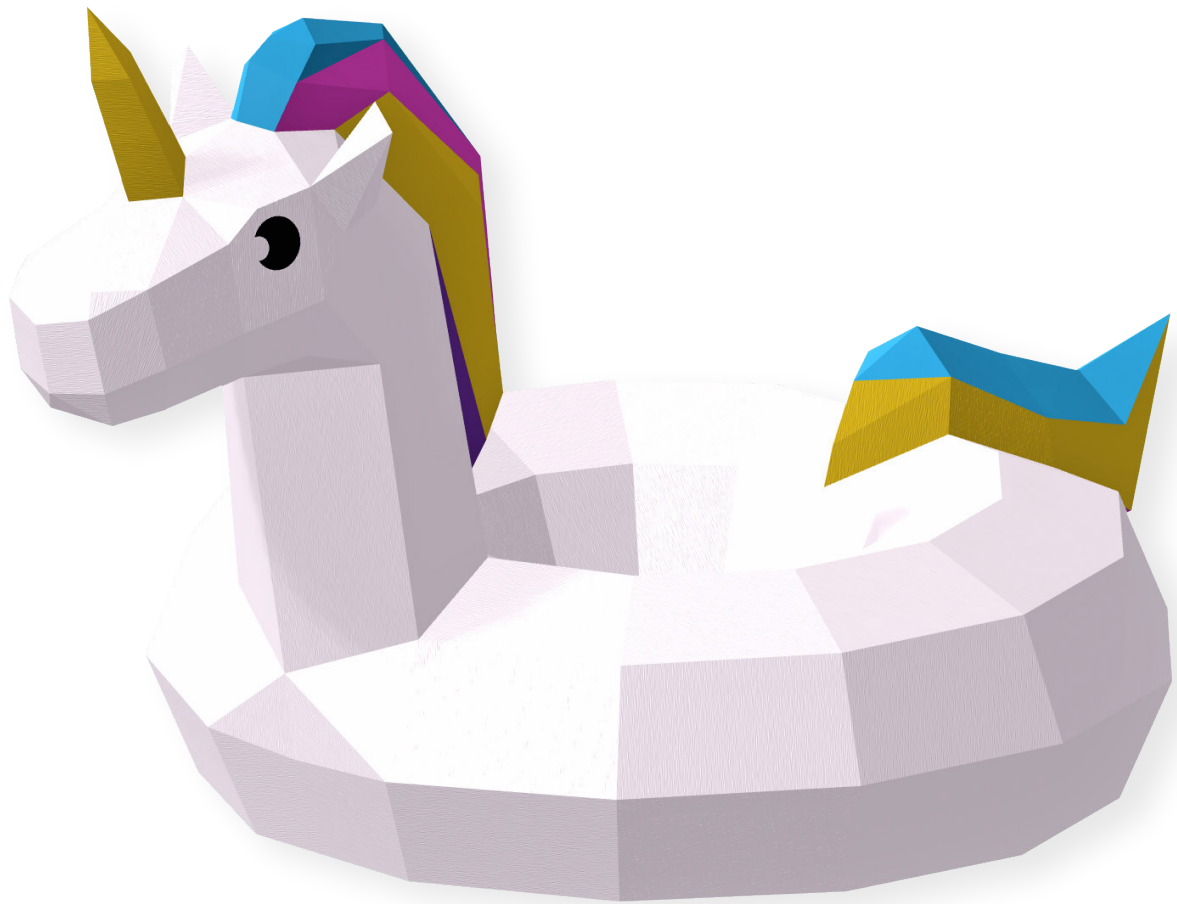




PAPERZONEVN

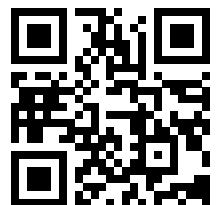


# UNICORN BUOY

PAPERCRAFT

23 x 25 x 37 cm

39 parts





## WHAT IS 3D PAPERCRAFT?

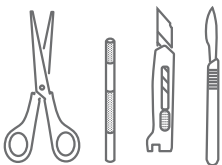
3D Papercraft is art of creating 3D objects from paper. Principle is simple, you cut the template parts, fold them along folding lines and use the extra flaps on template to glue parts together. In essence every connecting edge and flap are numbered, and you just need to match the number on the edge with the one on the flap and glue them together.

## WHAT YOU WILL NEED



### PAPER

Depending on the template, you might need paper in different colors. For best results thicker paper (180gsm or more) is preferred.



### CUTTING TOOL

You can use whichever tool you prefer like Cutting knife, Scalpel, Box cutter, Scissors as long as it's sharp.



### RULER

Depending on your cutting tool of choice, a metallic ruler will help you cut straight lines.



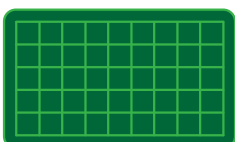
### GLUE

Glue suitable for paper. It needs to dry fast but leave enough time so you can position the flaps correctly. A fast acting wood glue will work too.



### CARDBOARD

For some templates you will need a piece of cardboard that will cover the whole "base". It's used to harden the important parts (like the backface which you'll use to hang the model to the wall or bottom to make it stand firm). 1mm - 2mm thick cardboard is preferred.



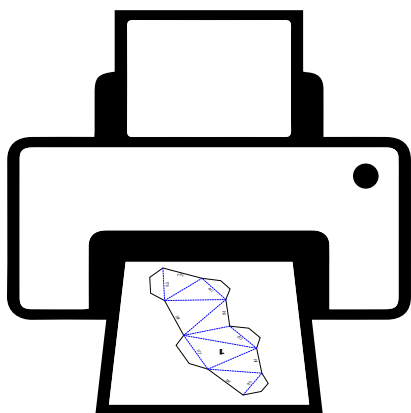
### SELF-HEALING CUTTING MAT

Not needed but sure is a plus!

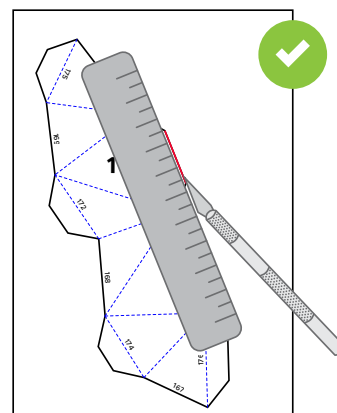
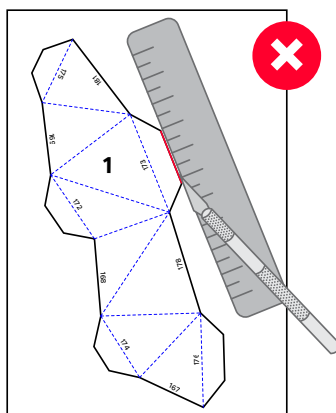


# PAPERZONEVN

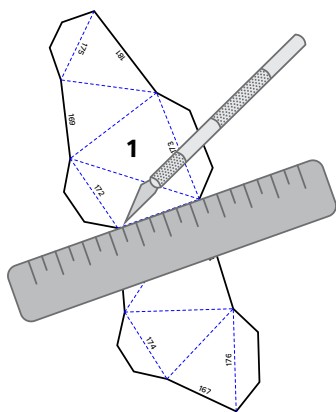
## ASSEMBLY STEPS



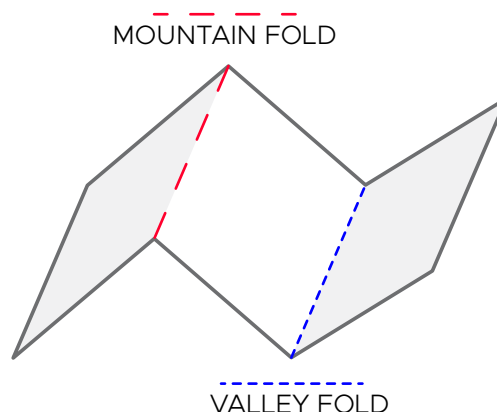
Print the template.



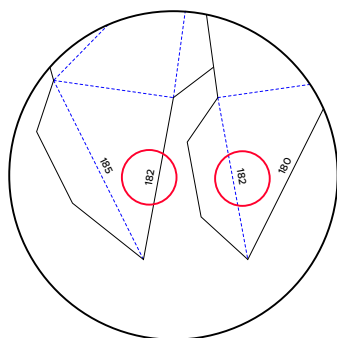
Cut along solid lines.



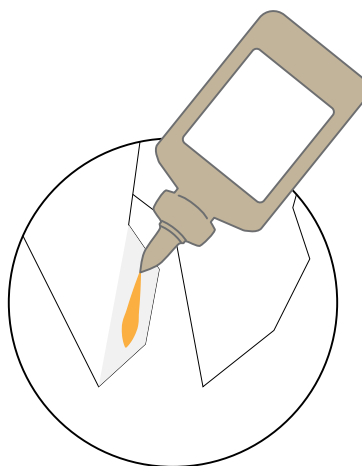
Pre-draw all the fold lines on the back blade of the knife.



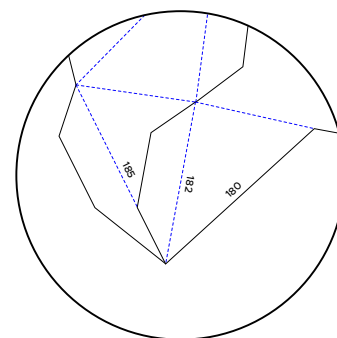
Fold all line according to the illustration.



Find the matching numbers.



Apply glue to the non-printed face of the flap.



Glue the flap over the printed edge number.

