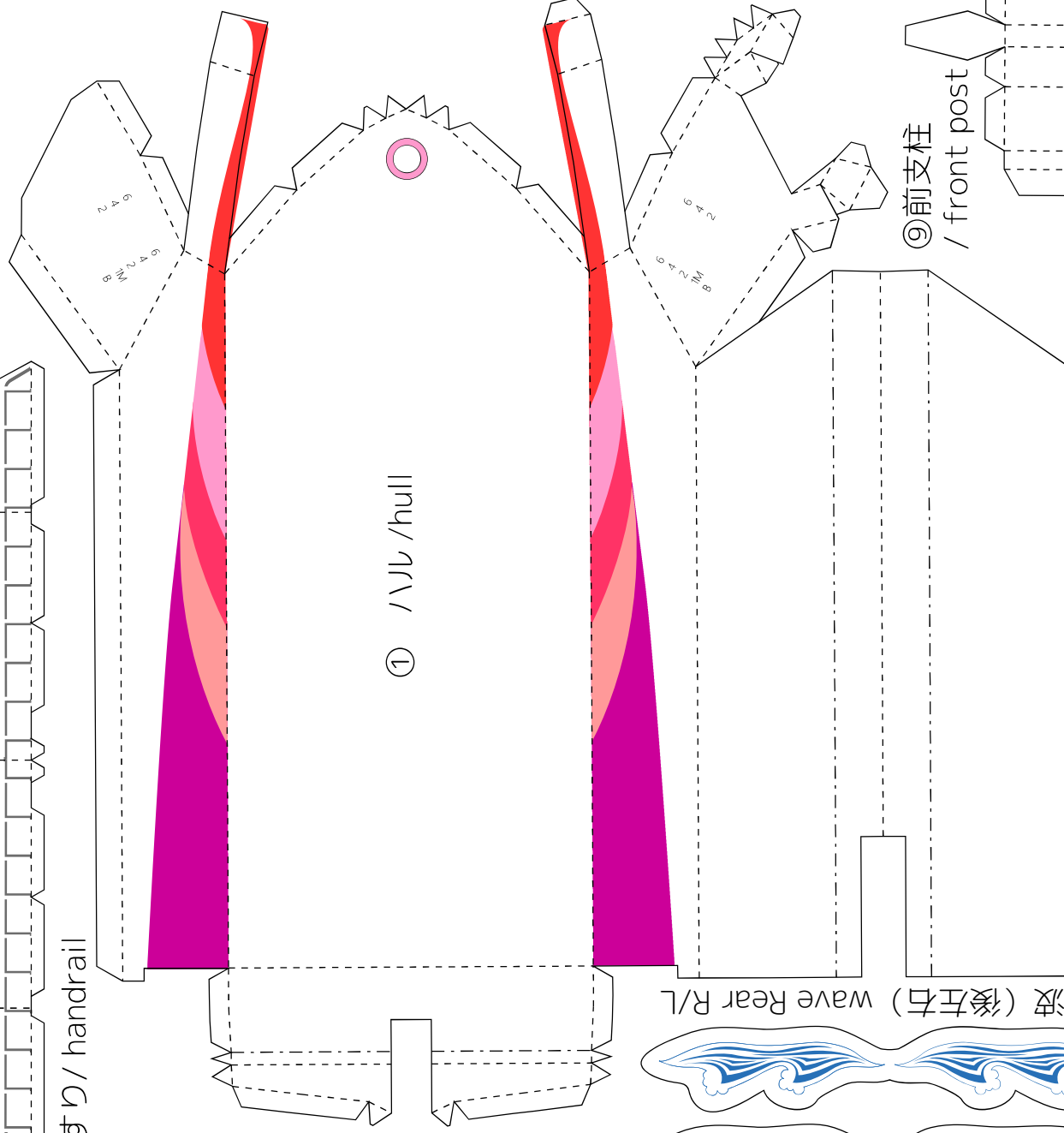
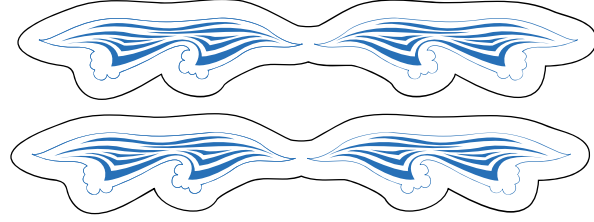


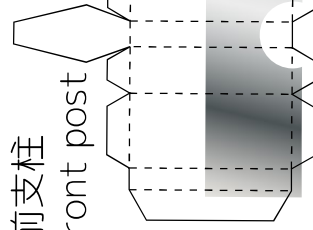
⑥手すり / handrail



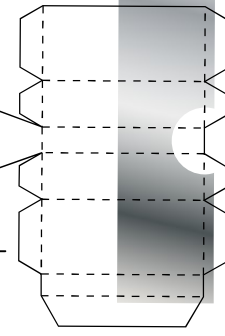
① ハル / hull



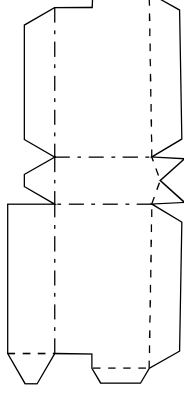
⑨波 (後左右) Wave Rear R/L



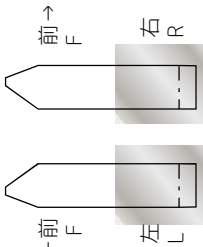
⑨前支柱
/ front post



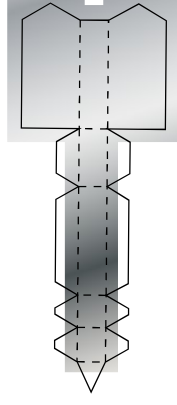
⑩後支柱
/ rear
post



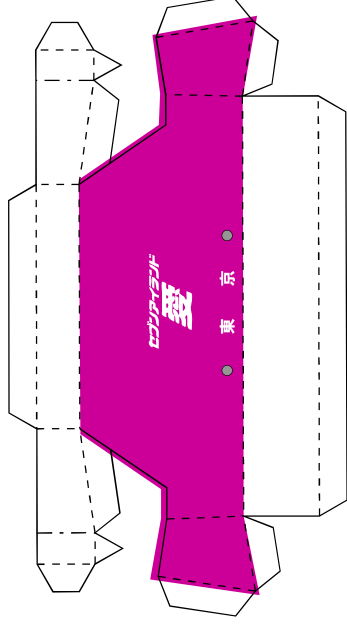
⑧後支柱へこみ
/ rear recess



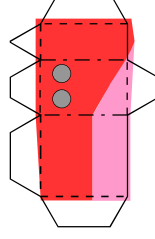
⑬後左右支柱
/ rear brace R/L



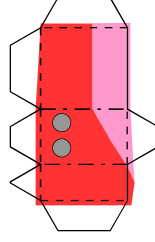
⑭後支柱下
/ under
rear post



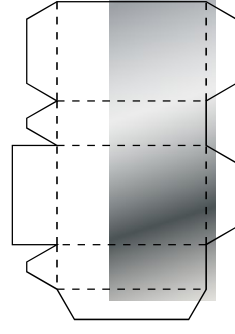
⑮トランサム / transom



④1Fドア左
/ door L



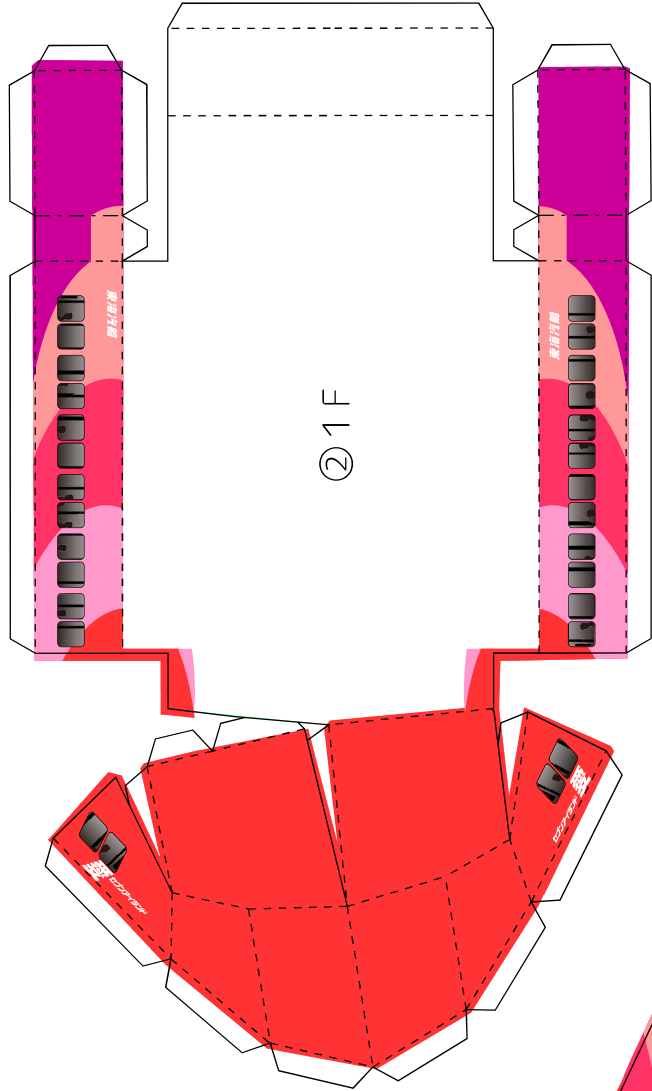
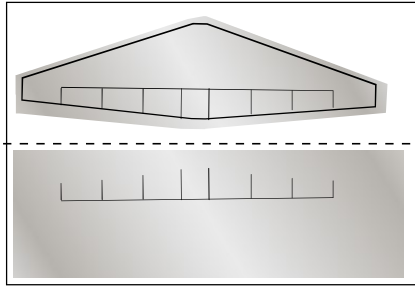
③1Fドア右
/ door R



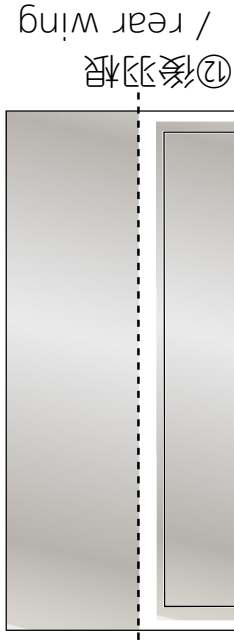
⑩後支柱
/ rear
post

⑪前羽根

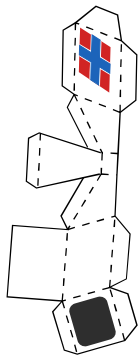
/ front wing



②1F

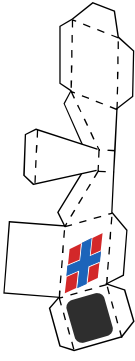


⑫後羽根

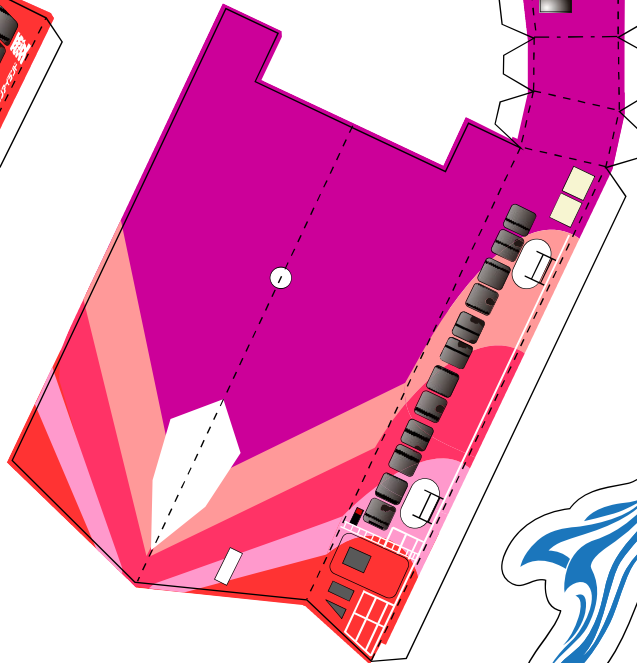


左 L

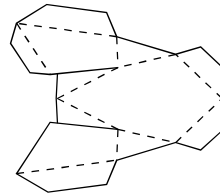
⑬左右煙突 / chimney R/L



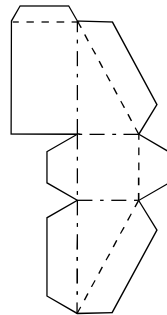
右 R



⑦2Fデッキ / deck

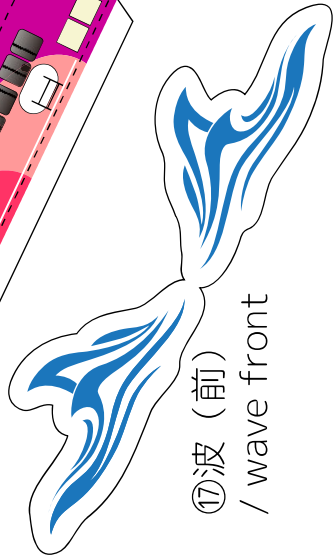


⑭アンテナ部 / antenna



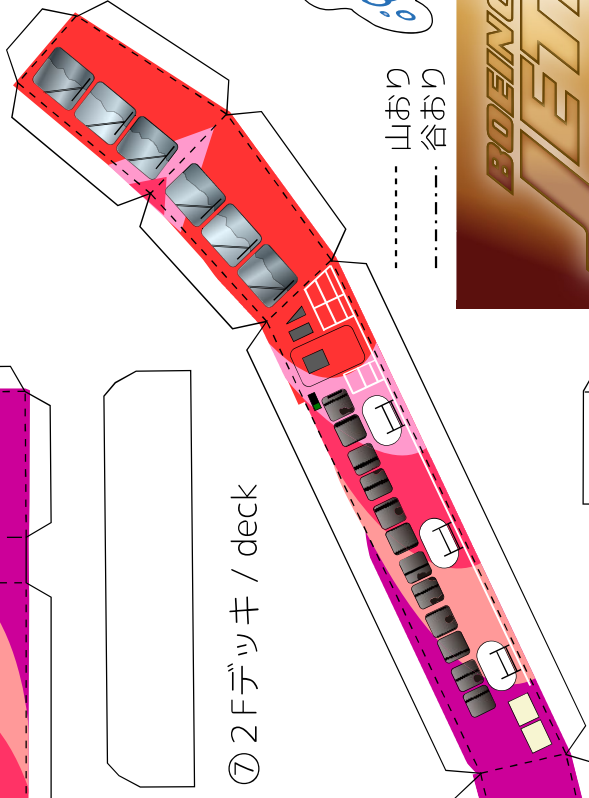
⑧前支柱へこみ / front recess

⑤2F

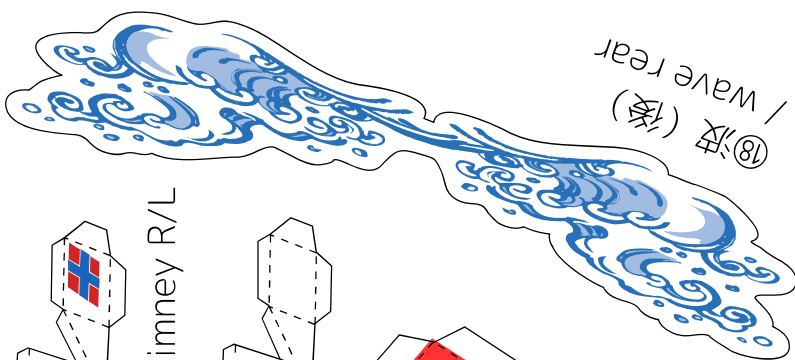


⑮波 (前)

/ wave front



山おり
谷おり



⑯波 (後)



速度: 43.0kt (時速約80km)
全長: 27.4m
全幅: 8.5m
総トン数: 281t (旧表示)
馬力: 3,800馬力×2
旅客定員: 254名

東海汽船: 愛
Seven Islands Ai
製作: いとーT
<https://itoht2.wixsite.com/paper>