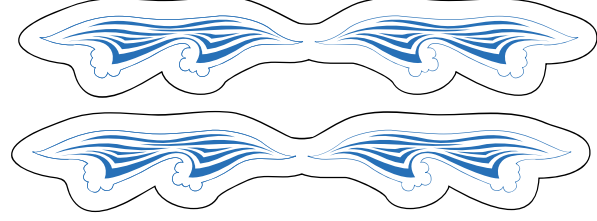
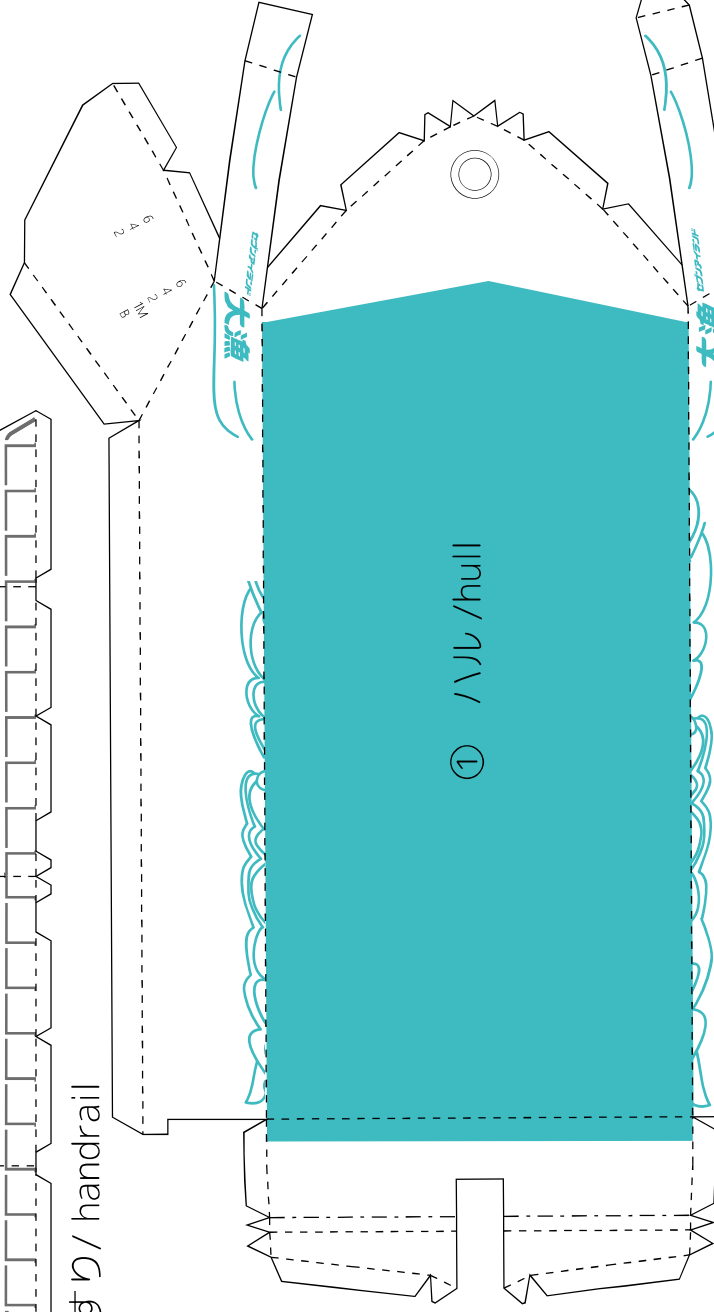
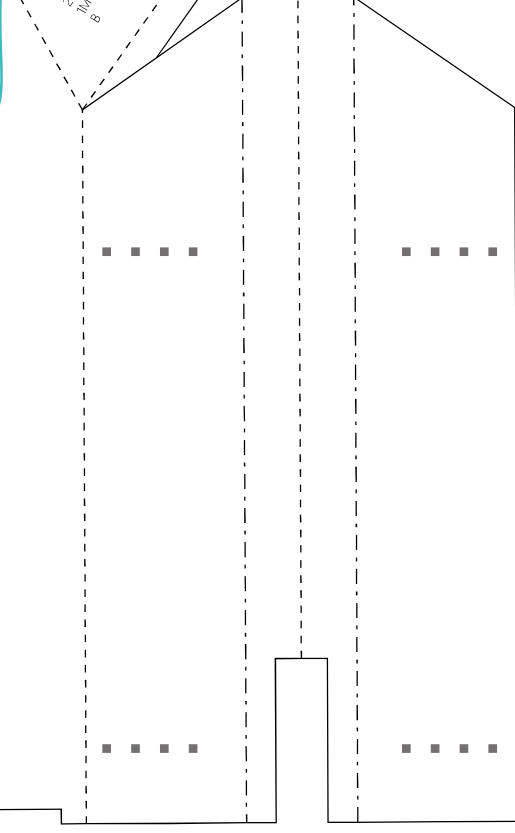


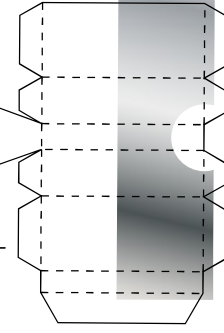
⑥手すり / handrail



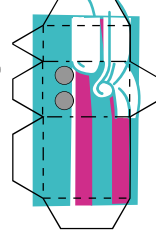
⑱波 (後左右) wave Rear R/L



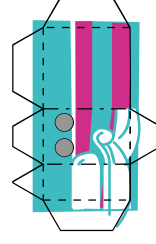
⑨前支柱 / front post



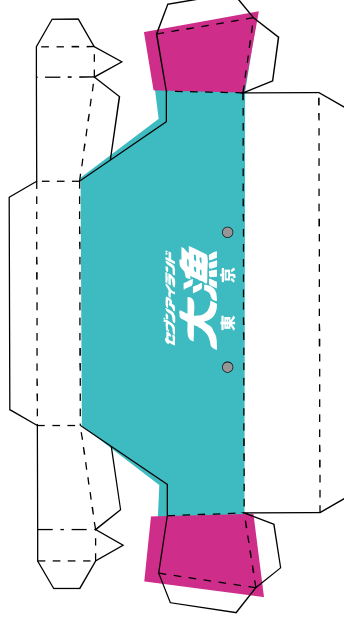
④1 Fドア左 / door L



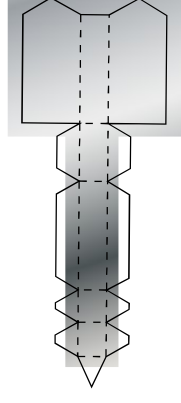
③1 Fドア右 / door R



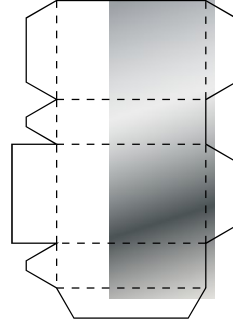
⑮トランサム / transom



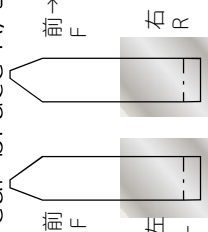
⑭後支柱下 / under rear post



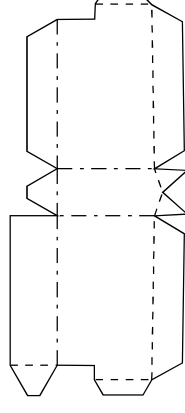
⑩後支柱 / rear post



⑬後左右支柱 / rear brace R/L

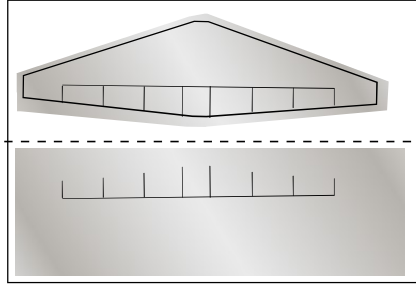


⑧後支柱へこみ / rear recess

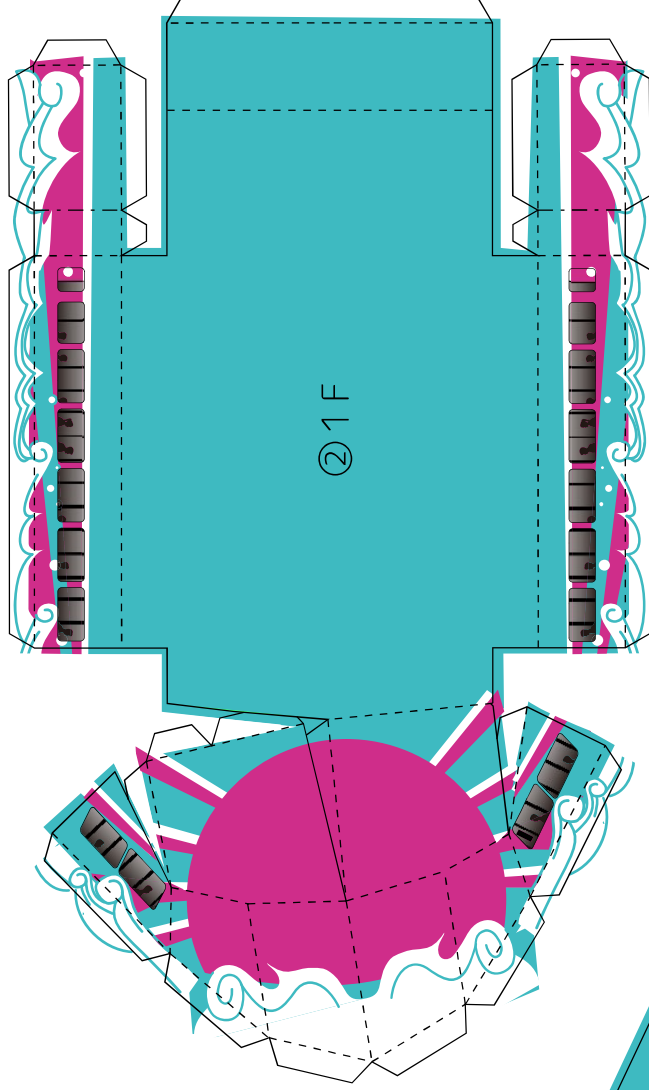


⑪前羽根

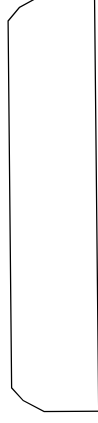
/ front wing



② 1 F

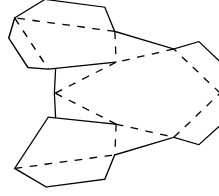


⑦ 2 Fデッキ / deck

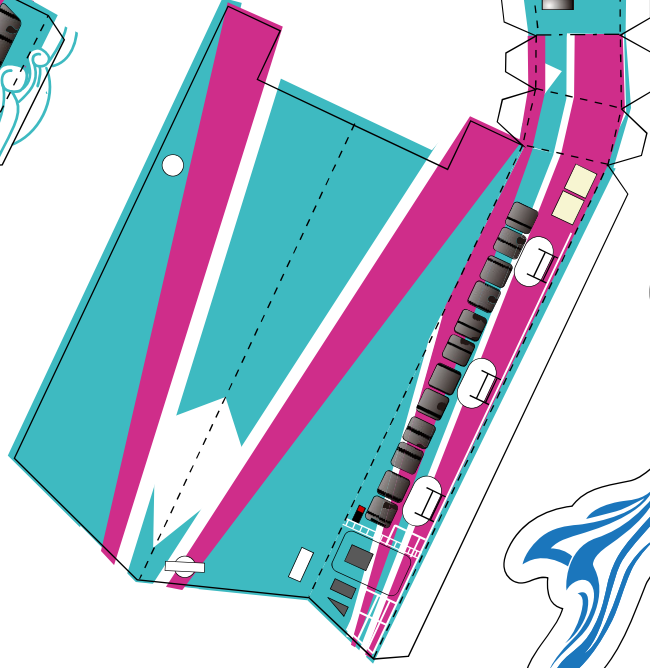


⑬ アンテナ部

/ antenna

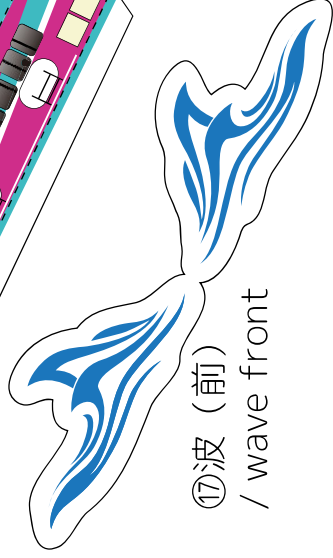


⑤ 2 F



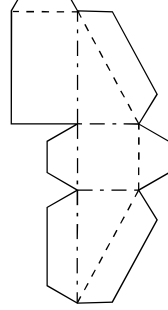
⑮ 波 (前)

/ wave front

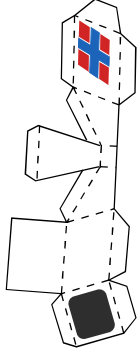


⑧ 前支柱へこみ

/ front recess

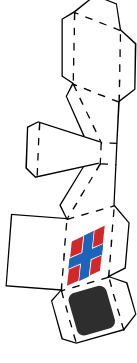


左 L



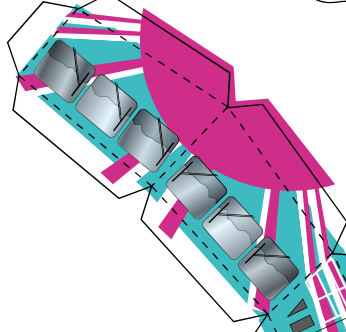
⑯ 左右煙突 / chimney R/L

右 R



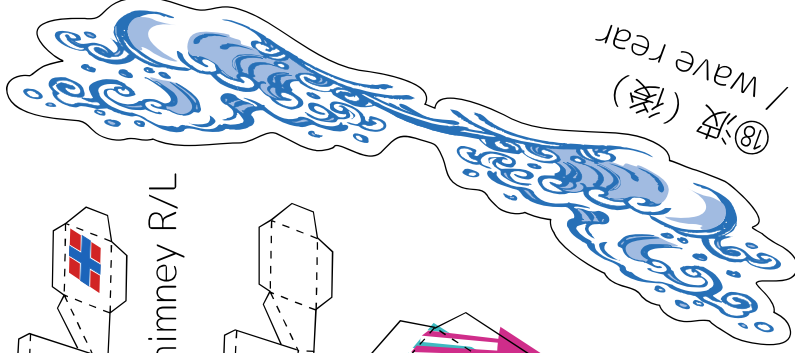
山おり

谷おり



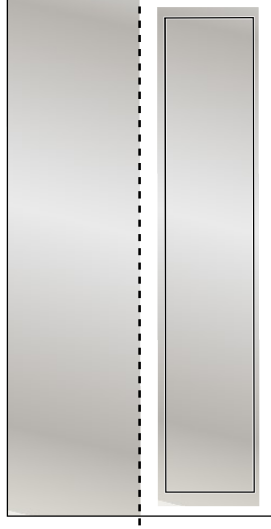
⑰ 波 (後)

/ wave rear



⑫ 後羽根

/ rear wing



速度: 43.0kt (時速約80km)

全長: 27.4m

全幅: 8.53m

総トン数: 165t

馬力: 3,800馬力×2

旅客定員: 254名



東海汽船: 大漁
製作: いとーT

<https://itoht2.wixsite.com/paper>