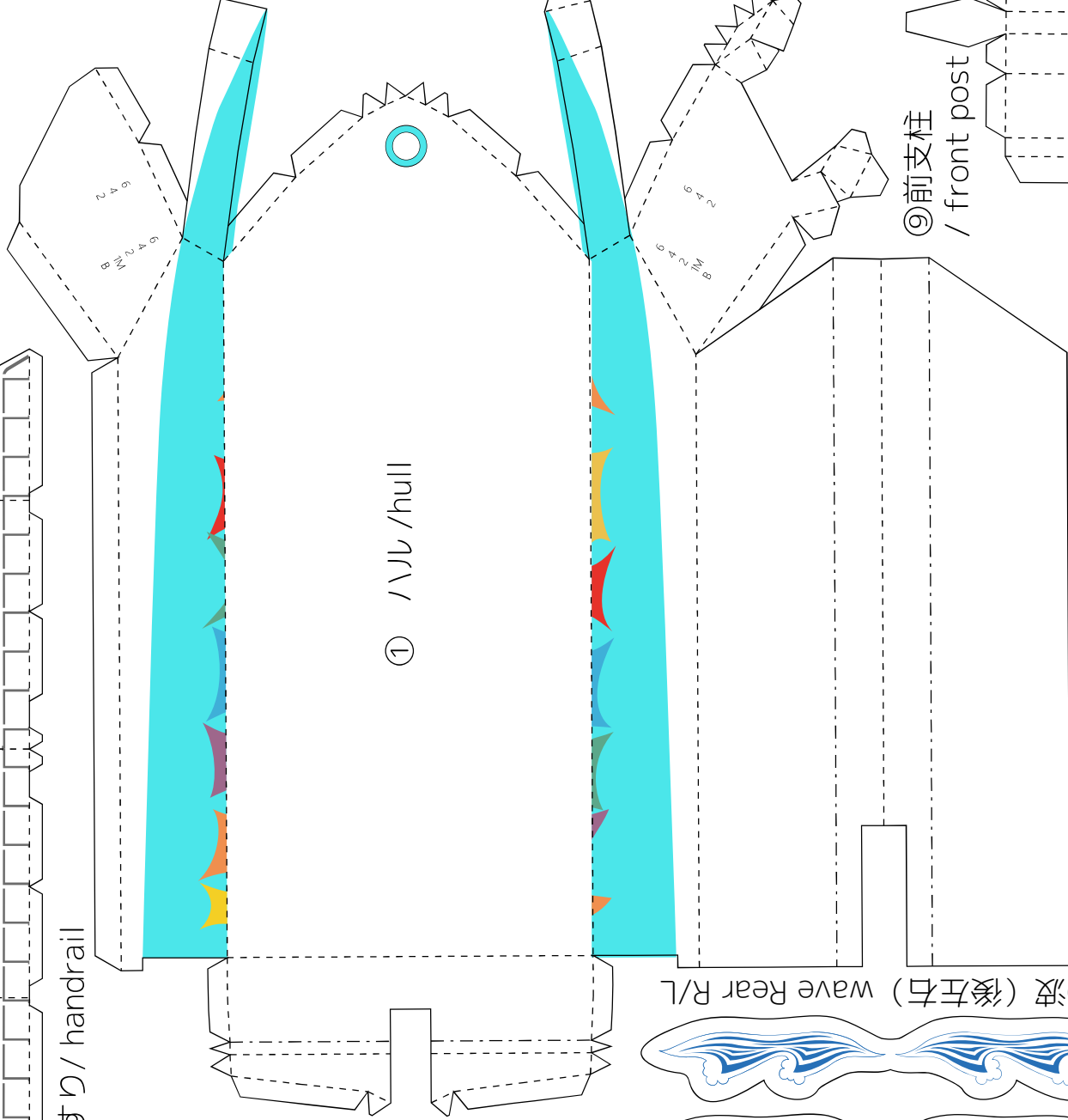
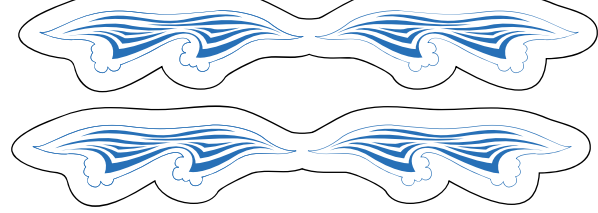


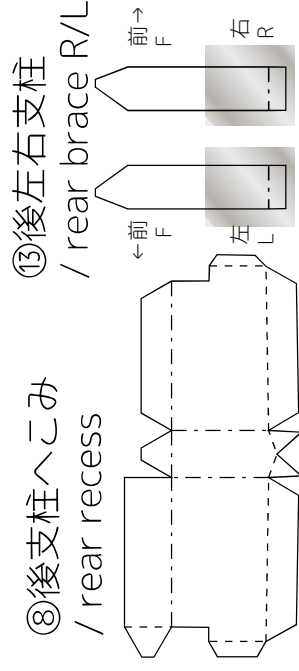
⑥手すり / handrail



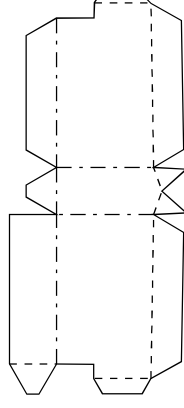
① / 丸 / hull



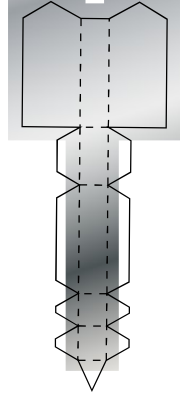
⑨波 (後左右) wave Rear R/L



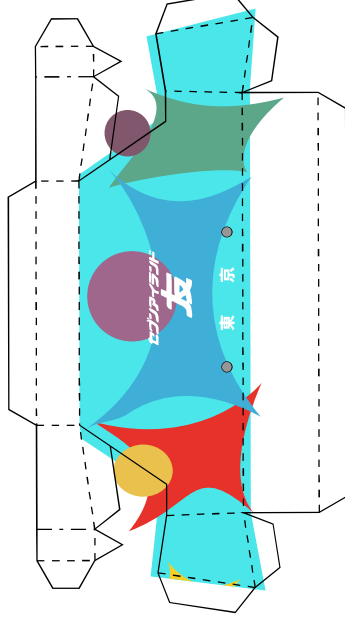
⑬後左右支柱
/ rear brace R/L



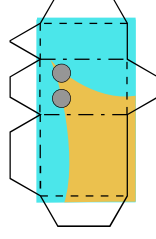
⑧後支柱へこみ
/ rear recess



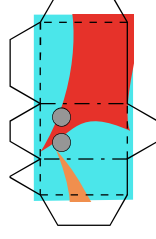
⑭後支柱下
/ under
rear post



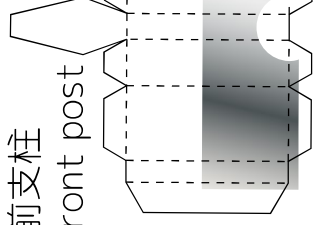
⑮トランサム / transom



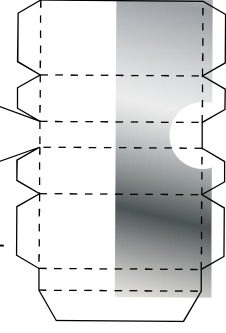
④1Fドア左
/ door L



③1Fドア右
/ door R

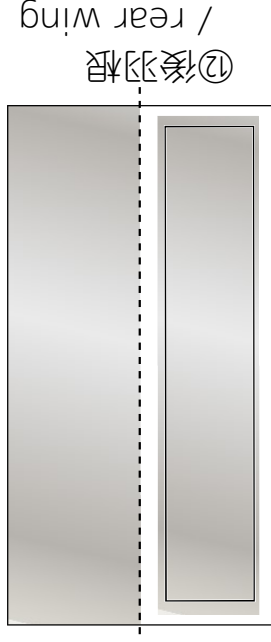
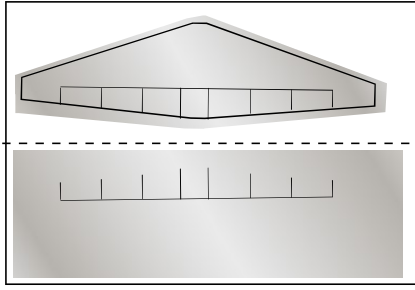


⑨前支柱
/ front post

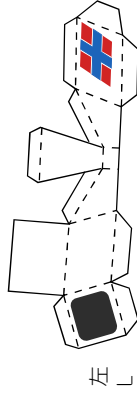


⑩後支柱
/ rear
post

⑪前羽根
/ front wing

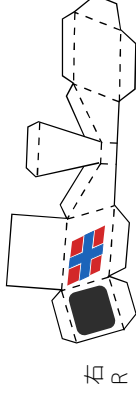


⑫後羽根
/ rear wing

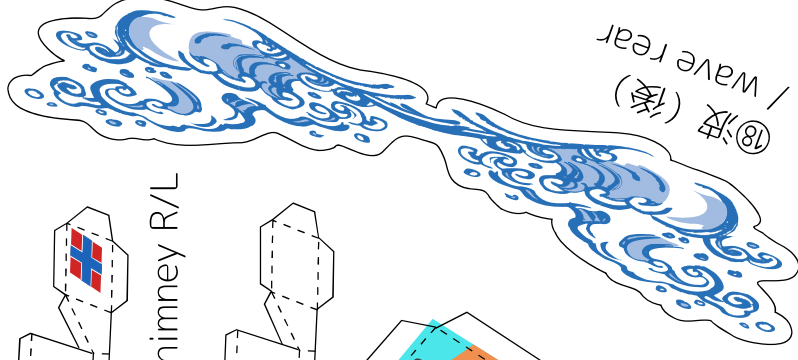


左 L

⑬左右煙突 / chimney R/L



右 R



⑬波 (前)
/ wave rear

山おり
谷おり

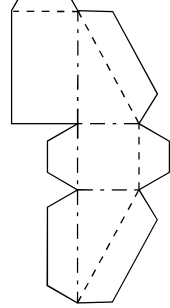


速度: 43.0kt (時速約80km)
全長: 27.4m
全幅: 8.5m
総トン数: 164t
馬力: 3,800馬力×2
旅客定員: 254名



東海汽船: 友
Seven Islands Tomo
製作: いとーT
<https://itoht2.wixsite.com/paper>

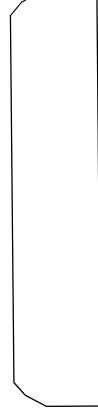
⑭前支柱へこみ
/ front recess



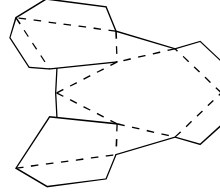
⑮2F



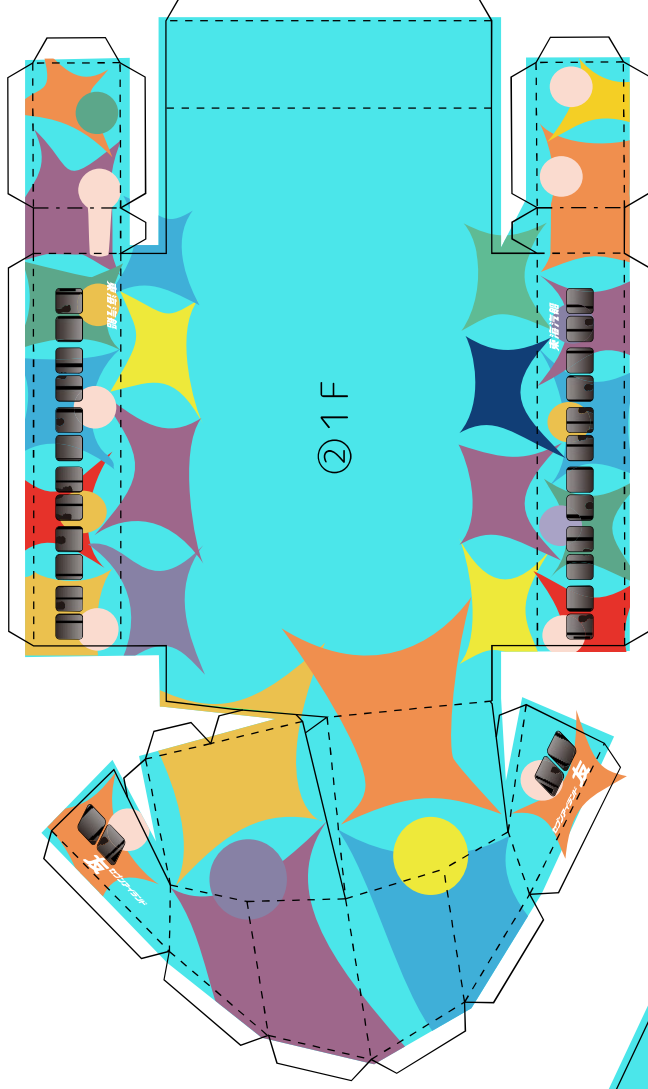
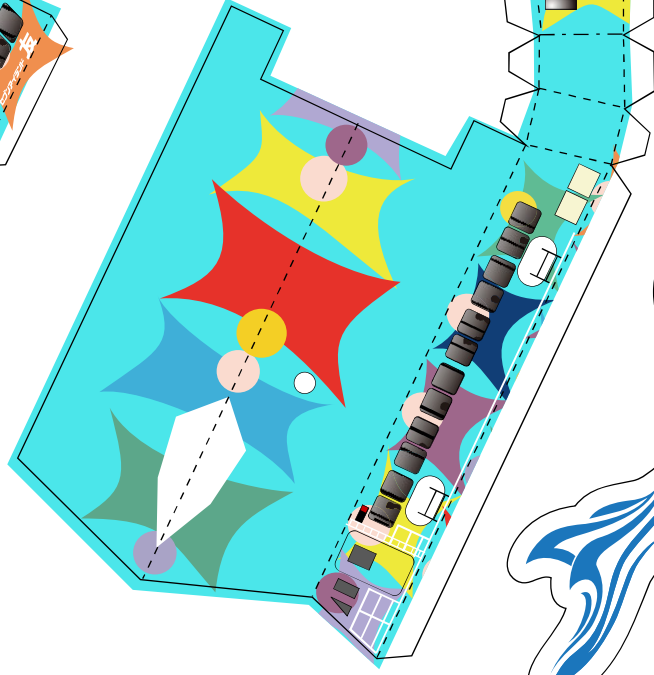
⑮波 (前)
/ wave front



⑯2Fデッキ / deck



⑯アンテナ部
/ antenna



⑰1F